

THE LOT NUMBER IS FOUND IN THE UPPER RIGHT
HAND CORNER OF LOTS AS YOU FACE THE SECTION
AND ARE INDICATED THUS

LOCATION OF GRAVE MARKERS SHOWN THUS
ARROW INDICATES DIRECTION GRAVE MARKERS
WILL FACE.

ALL LOTS ARE 2 GRAVE LOTS EXCEPT WHERE
OTHERWISE NOTED.

ALL 2 GRAVE LOTS ARE 6'x9'
" 3 " " " " 5'x9'

2 GRAVE LOTS = 904
3 GRAVE LOTS = 66
TOTAL = 970

Lot 1 to 878
Lot 4001 to 4041A
Lot 4042 to 4087A
Lot 4279A to 4308

HOLY CROSS CEMETERY
CLEVELAND, OHIO
NORTH PART OF
SECTION 17
Scale 1"=20' G.C.A. 7-29-49

Rev. ③ 1-15-85
Rev. ② 2-23-75
Rev. 1 2-17-62

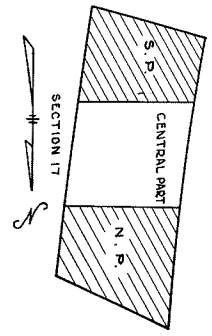
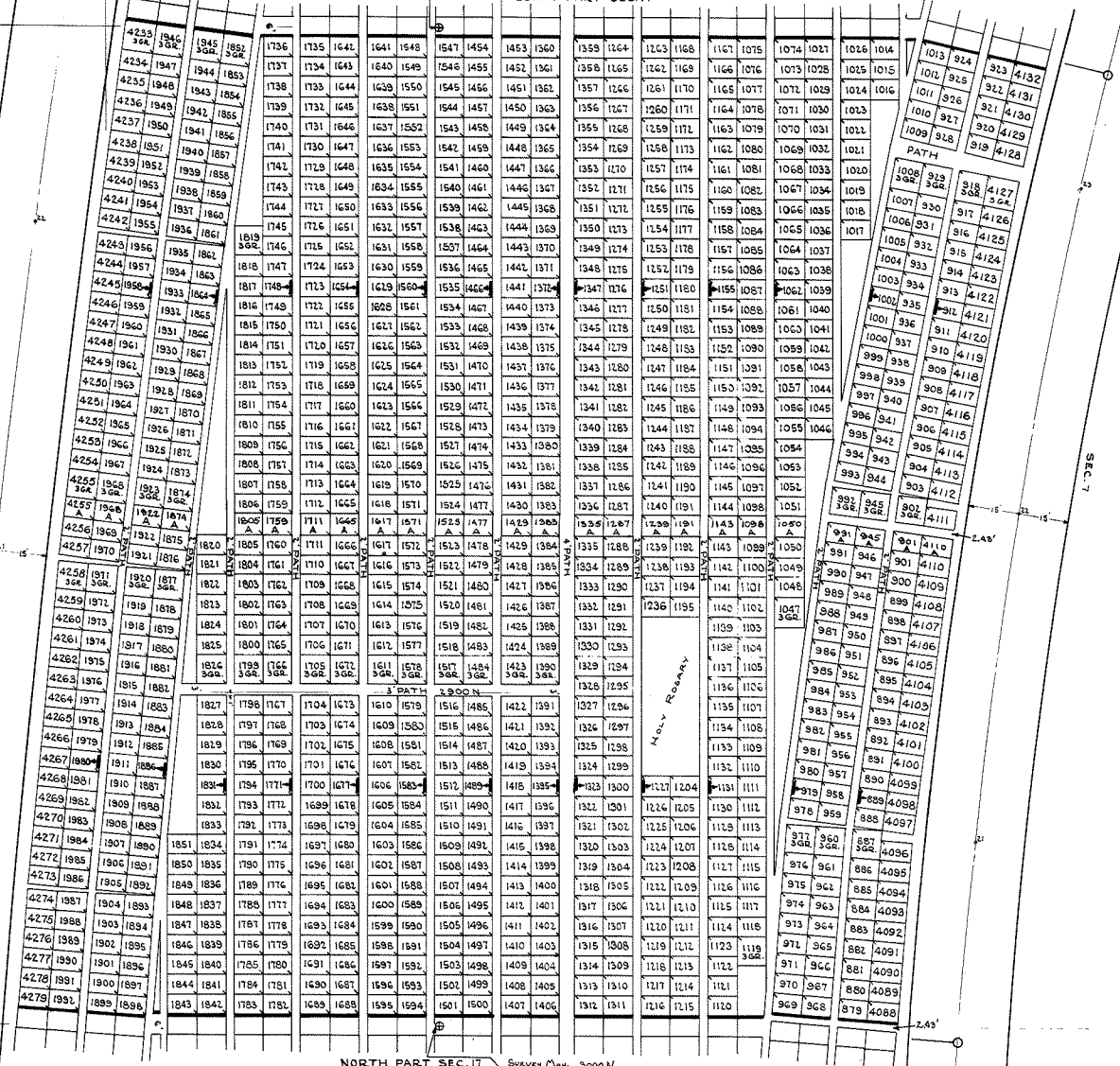
1100 N

Survey Map 2100 N
12/10/02

SOUTH PART SEC. 17

SEC. 16

SEC. 7



THE LOT NUMBER IS FOUND IN THE UPPER RIGHT HAND CORNER OF LOTS AS YOU FACE THE SECTION AND ARE INDICATED THUS. []

LOCATION OF GRAVE MARKERS SHOWN THUS [] WITH AN ARROW INDICATES DIRECTION GRAVE MARKERS WILL FACE.

ALL LOTS ARE 2 GRAVE LOTS EXCEPT WHERE OTHERWISE NOTED.
ALL 2 GRAVE LOTS ARE 6'x5' 9'x5'

2 GRAVE LOTS = 1129
3 GRAVE LOTS = 36
TOTAL = 1165

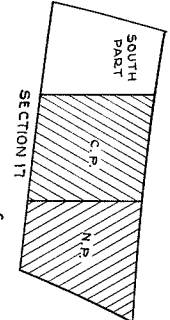
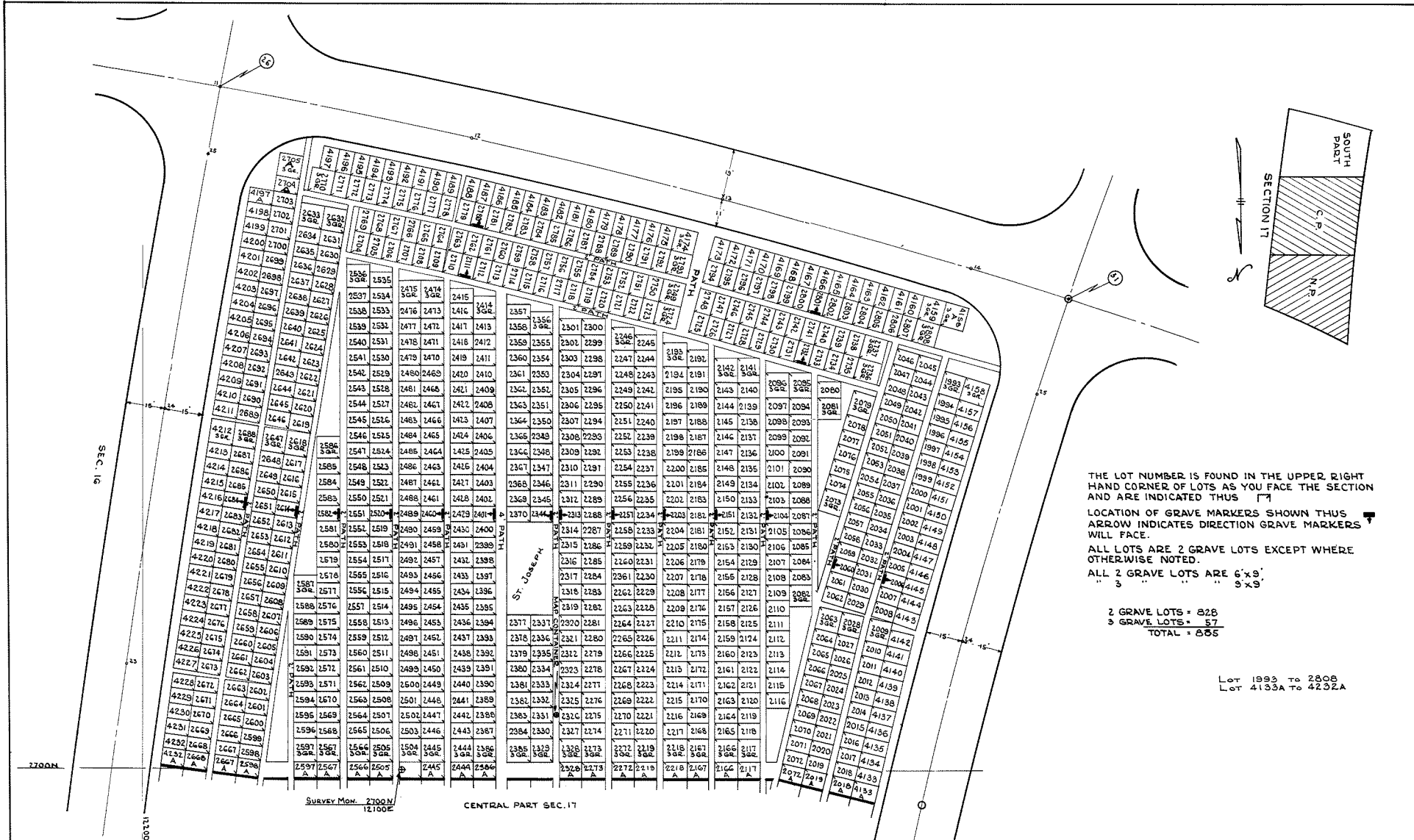
LOT 879 TO 1992
LOT 4088 TO 4132
LOT 4233 TO 4275

HOLY CROSS CEMETERY
CLEVELAND, OHIO
CENTRAL PART OF
SECTION 17
Scale 1"=20' G.C.A. T-6-49

REV. 1-15-05
REV. 1-23-75
REV. 1-2-17-02

NORTH PART SEC. 17 Survey Map 3000 N
12/10/02

3000 N



THE LOT NUMBER IS FOUND IN THE UPPER RIGHT HAND CORNER OF LOTS AS YOU FACE THE SECTION AND ARE INDICATED THUS []

LOCATION OF GRAVE MARKERS SHOWN THUS []

ARROW INDICATES DIRECTION GRAVE MARKERS WILL FACE.

ALL LOTS ARE 2 GRAVE LOTS EXCEPT WHERE OTHERWISE NOTED.

ALL 2 GRAVE LOTS ARE 6'x5'
 " 3 " " " 5'x5'

2 GRAVE LOTS = 828
 3 GRAVE LOTS = 57
 TOTAL = 885

Lot 1993 to 2808
 Lot 4133A to 4232A

Survey Mon. 2700M
 12100E

CENTRAL PART SEC. 17

HOLY CROSS CEMETERY
 CLEVELAND, OHIO
 SOUTH PART OF
SECTION 17
 Scale 1"=20' G.C.A. 7-5-49

Rev. 1-15-95
 Rev. 1-25-75
 Rev. 2-27-62
 Rev. 1-9-75